



## Notes On Inking

This tutorial is on how to start inking your [final comic page worksheet](#).

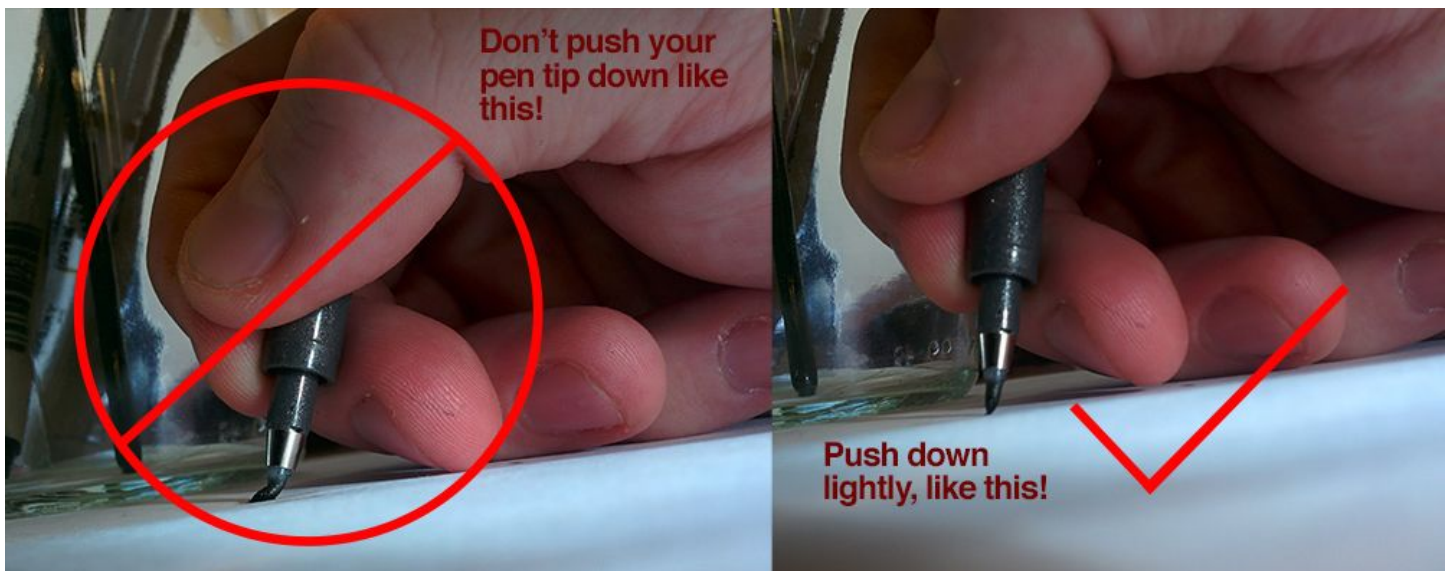
In the past 100 years we have come a long way with comic book creation. Originally, inking was vital because comics were typically seen in newspapers which could only print in black and white. Since then technology has changed and comics are now created in a number of different colors, techniques, and styles from hand-crafted to digital.

For our comic project we are kicking it old school and giving you the tactile experience of inking your comic by hand. The comic pen you are using is the exact same one used to create the [model comic](#) made for this project.

### 1.

The most important place to start is looking closely at how to hold your pen and how to use it.

- **Most importantly:** Be very delicate with the inking pen! You will destroy the tip if you push down too hard on it, and more than that your comic will not come out looking as good.
- Hold the pen like it is a brush. Use it delicately and make small lines at first that build up into bigger ones.





## 2.

### Final Inking Tips:

- It has been stated before, but go slower than you think you need to. Your goal is to make your drawings the best that they can be, so make sure that you are taking your time and really focusing on your lines being confident.

- If you are finding that your inking hand is shaking, it is most likely being caused by nerves. Breathe while you work. Breathing slowly and deeply will send oxygen into your blood making you more relaxed. Focus on your breathing and your approach will be more focused and calm.

- Practice your lines on a scratch piece of paper. You want to make sure the lines you put down into your comic are the best they can be. Practice makes perfect and trying it on scratch paper before you put it on your final drawing will help you feel better about the lines that you are about to make.

- Don't be afraid to turn your paper. Sometime drawing from different angles can help make sure your lines are straight (or curved) the way you would like them to be.

- If you are right-handed ink from the top left to the lower right, and if left-handed do the opposite. There is nothing worse than smearing ink on your page because you rest your hand in a line you just drew

If you want to see someone inking with a zebra pen check this out:

<https://www.youtube.com/watch?v=jfsqS6iY8ho>