

# Dear Data

[the book](#)[the project](#)[press](#)[the authors](#)[get in touch](#)[news!](#)

**Dear Data is a year-long,  
analog data drawing  
project by Giorgia Lupi  
and Stefanie Posavec,  
two award-winning  
information designers  
living on different sides  
of the Atlantic.**

By collecting and hand drawing their  
personal data and sending it to each other  
in the form of postcards, they became  
friends.

**Dear Data is now also a beautiful  
300-page book**



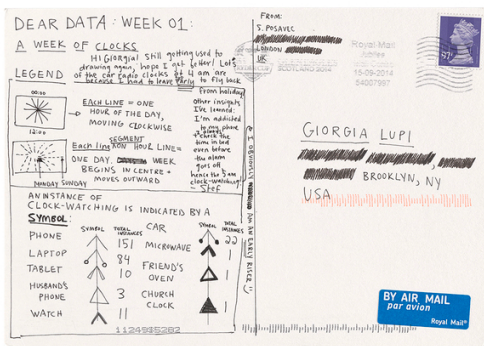
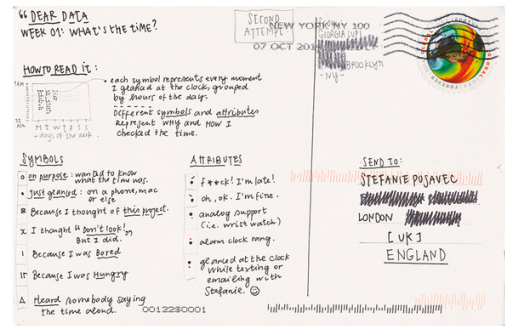
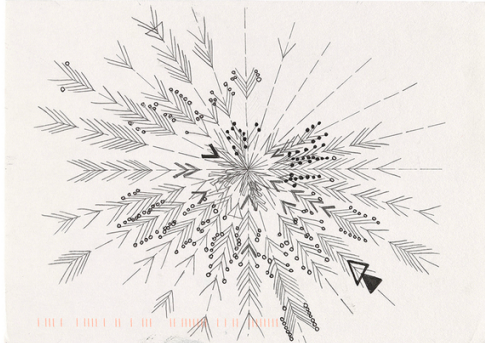
**Each week, and for a year, we collected and measured a particular type of data about our lives, used this data to make a drawing on a postcard-sized sheet of paper, and then dropped the postcard in an English “postbox” (Stefanie) or an American “mailbox” (Giorgia)!**

Eventually, the postcard arrived at the other person's address with all the scuff marks of its journey over the ocean: a type of "slow data" transmission.

GEORGIA week one



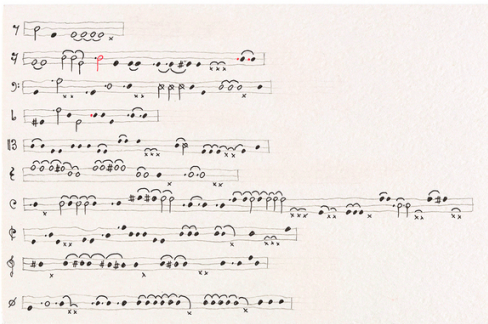
a week of clocks Stefanie



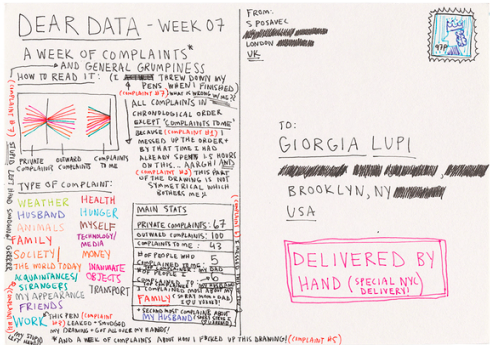
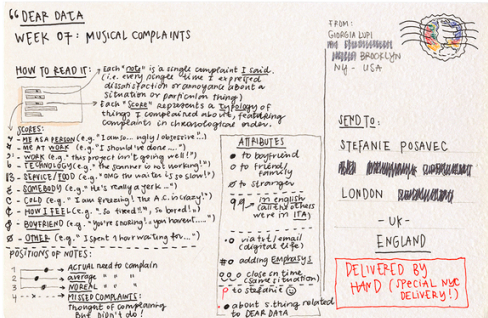
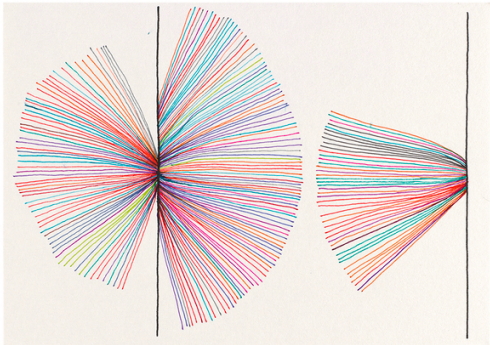
Drawing her first postcard, Georgia had an idea for her whole collection: from now on every time she tracks something related to Stefanie, or to Dear Data, she uses a special pen to represent it!  
pink ink pen!

This week Georgia and Stefanie tried gathering data in small notebooks (redious), but soon switched to making notes on their phones (much easier). Stefanie's favourite clock to capture a bell tolling the time in a town in Devon.

GEORGIA week seven



a week of complaints Stefanie



What better visual reference than a musical score to show the repetitiveness of Georgia's protests and the "level" of complaints: whether they are justified or totally out of place.

Note the hand-drawn stamps: these postcards were delivered in person in New York!



**Over the fifty-two weeks, the collecting of data about our lives became a kind of ritual. We would spend the week noticing and noting down our activities or thoughts, before translating this information into a hand-drawn visualization.**

On the front of the postcard there would be a unique representation of our weekly data, and, on the other side (in addition to the necessary postage and address), we would squeeze in detailed keys to our drawings: the code to enable the recipient to decipher the picture, and to fantasize about what had happened to her new friend the week before.

We prefer to approach data in a slower, more analogue way. We've always conceived Dear Data as a "personal documentary" rather than a quantified-self project which is a subtle — but important — distinction. Instead of using data just to

become more efficient, we argue we can use data to become more humane and to connect with ourselves and others at a deeper level.

Stefanie drew indecision as a twisting, ruminating line. The only decision she regretted this week: her poor selection off the menu while eating at a restaurant.

Stefanie was banned by her husband from gathering data at her birthday dinner in a posh restaurant (for obvious reasons). Hence the "data void".



Big Bang Data: Dear Data



Dear Data, video created by Somerset House, London





**Eyeo 2015 – Giorgia Lupi and Stefanie Posavec**  
from **Eyeo Festival**



53:27



2015, Eyeo Festival, Opening Keynote



## Giorgia Lupi & Stefanie Posavec - Dear Data: A friendship in data, drawing and postcards

from **VISUALIZED**

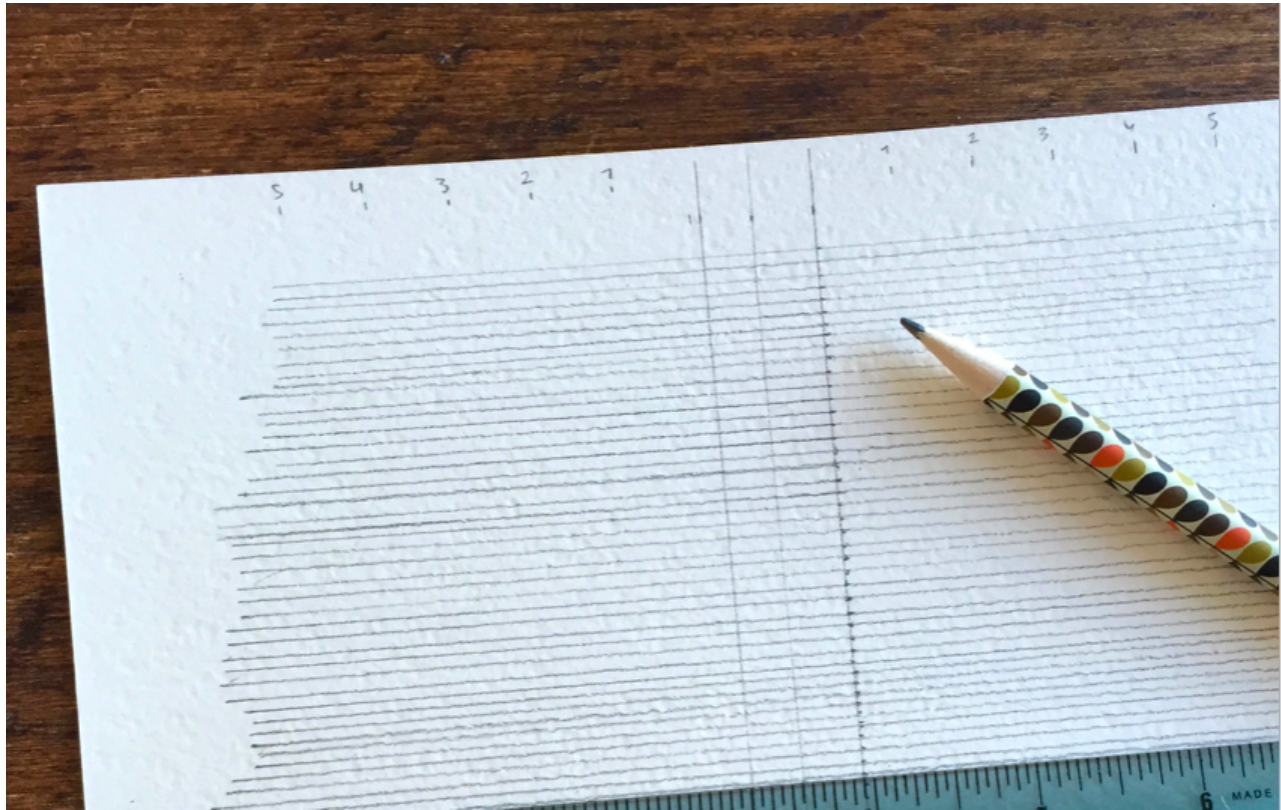


23:10



2015 - VISUALIZED, closing keynote

# IT'S YOUR TURN!



**Dear friends of Dear  
Data,**

**We're incredibly happy  
to say we've received so  
many messages from  
enthusiasts people of  
different ages and  
backgrounds who are  
drawing their data.**

**This section is for you.**

1. **Are you or your students already drawing your data?**

Email us! We will be opening a gallery shortly to showcase all of your artwork.

However, we will only accept artwork where your and your pen pal's home addresses are blurred/covered (and surnames / full names blurred for children, as per your school's or their parents' preference), as we would prefer to keep your details private.

2. **Are you a teacher and interested in using the Dear Data format with your students?**

Subscribe to this mailing group and introduce yourself. You will be able to share your experience, learn from others and find data pen pals for your students.

3. **Are you looking for a data penpal?**

Subscribe to this group and introduce yourself.

**We believe there is a**



**huge potential to use this method to inspire students and non-data experts to start working with data, or as a simple way to meet a new friend while also connecting with yourself at a deeper level.**

All we kindly ask is that you to keep us posted (haha) on how your experiments are going! Please send us scans or pictures of your (or your students) postcards for our research and for our records! We'd love to share your data artwork with the world (so long as you give us permission).

**All our best and thanks for your support in Dear Data,  
Giorgia and Stefanie**

PS: looking for clues on how to collect and draw your data? Check the bottom of [this post on Five Thirty Eight](#) where we gave some suggestions!



 Dear Data Deliveries RSS

